

Important Preinstallation Note:

Do not handle fixtures without gloves.
READ ALL INSTRUCTIONS THOROUGHLY BEFORE ATTEMPTING INSTALLATION.

LINCOR
Surface Mounted

DANGER

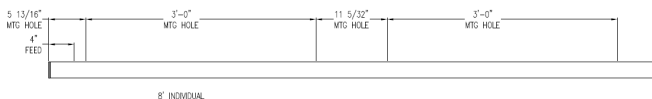
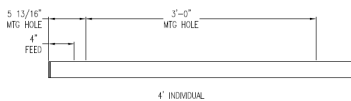
RISK OF FIRE AND ELECTRICAL SHOCK

Contact, improper installation, or improper servicing MAY RESULT IN DEATH OR SERIOUS INJURY!

Fixture must be installed by a qualified electrician only. Fixture is intended for installation in accordance with the National Electrical Code, local and federal code specifications. Disconnect power at electrical panel before servicing. Retain these instructions for maintenance reference.

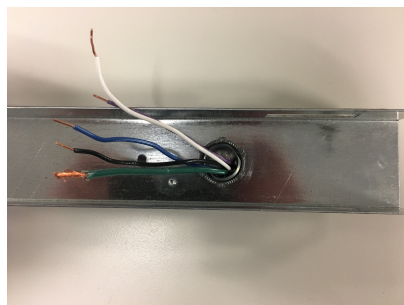
1 Unpack fixture. Fixture is shipped pre-assembled with surface channel wrapped separately

2 Determine spacing for mounting points.



3 Install surface channel

Screw surface channel to the ceiling with feed cord passed into knock out in the channel



*Hardware supplied by others.

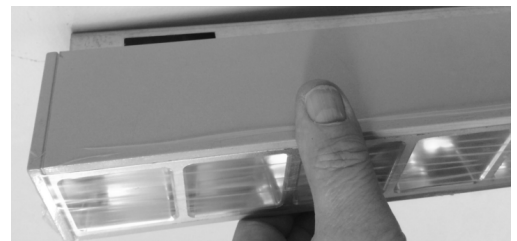
4 Attach safety cable to surface channel there are two safety cables assembled on the fixture.



5 Make electrical connections to supplied power quick disconnect.

STD WIRE COLOR LEGENDS	
COLOR	CONNECTION
BLACK	HOT
WHITE	NEUTRAL
GREEN	GROUND
VIOLET	DIM (+)
GREY	DIM (-)

6 Install fixture Insert fixture carefully into channel until springs will snap in.



Maintenance - Turn off power first!

1 Cleaning. Wipe with a lint-free, soft cloth. Try to avoid contact with the minicell louvers. Use a light burst of dry air for cleaning the minicell louvers if possible. DO NOT use glass cleaner or other solvents!

2 Access to driver. For integral driver, pull fixture down to release from surface channel.

3 Replacement of LED boards. Call Zumtobel prior to accessing LED board at (800) 448-4131!